

## ➤ Standard Fiber Optic Patch Cord Series

Net Beats offers a wide range of patch cords, designed and manufactured for demanding network applications. It comprises of multimode and singlemode. Both ends are terminated with a high performance hybrid or single type connector comprising of a SC, ST, FC, LC, MU, MTRJ, E2000, DIN connector in simplex and duplex.

### Standards Compliance

- Telcordia (formerly Bellcore) GR-326-CORE Generic requirements for Single mode optical connectors and Jumper assemblies.
- IEC 874-1 Generic specification for fiber optic connectors and cables
- ANSI/TIA-568-C.3, ISO/IEC 11801 2nd Ed., CENELEC EN 50173, UL94V-0
- Cable flame resistant rate: OFNR or IEC60332-3 standard

### Features:

- 100% tested on optical performance (Insertion Loss Customer specified length & Return Loss)
- Standard colour is Yellow, Orange or Aqua, other colours available upon request
- Cable outer jacket available in PVC, Low Smoke Zero Halogen (LSZH)
- PC, UPC, APC connectors type available
- High concentricity 2.5mm ceramic ferrule for FC, ST, SC and 1.25mm ceramic ferrule for LC and MU
- Available in G652D, G657A, OM1, OM2, OM3 and OM4
- Position A/Position B markings
- Available in 0.9mm, 1.6mm, 2.0mm, 3.0mm sizes

### Mechanical, Environmental & Material Data

Range of Mode	Single or Multimode
Cable Type	Simplex or Duplex Zipcord
Connector Style	SC, FC, ST, LC, MU, MTRJ, E2000, DIN
Polish or Ferrule Interface Type	PC, UPC, APC
Cable Diameter	0.9mm, 1.6mm, 1.8mm, 2.0mm, 3.0mm
Lengths	Standard & Custom Lengths
Strength Member	Aramid Yarn
Outer Jacket	PVC or LSZH
Cable Assembly Length (<15 meter Tolerance)	-0/+100mm
Cable Assembly Length (>15 meter Tolerance)	-0/+10%
Jacket Color (Multimode: OM1 & OM2)	Orange
Jacket Color (Multimode: OM3)	Aqua
Jacket Color (Multimode: OM4)	Aqua or Purple
Jacket Color (Single Mode: G652D & Gb57A)	Yellow
Durability	500 cycles(0.2 dB max increase), 1000 mate/demate cycles
Operating Temp.	-20 °C to +70°C/+85°C (armoured)
Storage Temp.	-40 °C to +85°C
Ferrule Concentricity	< 1µm, Other Ferrule Concentricity < 1µm
Humidity (FOTP-5)	90-95% at 40°C
Strength of Coupling Mechanism (FOTP-185)	33 N at 0° for 5 sec
Cable Retention (FOTP-6)	50 N at 0° for 5 sec.
Twist (FOTP-36)	15 N at 0° 5 turns, 10 cycles
Flex (FOTP-1)	0.5 Kg at 25 cm, +90° to -90°, 100 cycles

## Optical Characteristics

Fiber Type	Max. Attenuation(dB/km)				Min.Overfill Launch Bandwidth (Mhz.km)		Min.Gigabit Ethernet Link Distance (m)		
	850nm	1300nm	1310nm	1550nm	850nm	1300nm	Gigabit		10Gigabit
							850nm	1300nm	850nm
OM1 62.5/125µm	≤2.7	≤0.6	-	-	≥500	≥600	275	550	-
OM2 50/125µm	≤2.3	≤0.6	-	-	≥500	≥500	750	600	150
OM3 50/125µm	≤2.3	≤0.6	-	-	≥1500	≥500	1000	600	300
OM4 50/125µm	≤2.3	≤0.6	-	-	≥3500	≥500	1100	600	550
G652D 9/125µm	-	-	≤0.30	≤0.18	-	-	-	-	-
G657A 9/125µm	-	-	≤0.35	≤0.21	-	-	-	-	-

## Optical Performance data

Item	Single mode			Multimode		
	PC	UPC	APC	62.5/125	50/125	50/125 10G
Insert Loss/connector (single Fiber)	0.2dB Max. (0.15dB typ.)			0.3dB Max. (0.25dB typ.)		
Return Loss	≥45 dB	≥50 dB	≥60 dB	N.A		
Insert Loss/MTRJ Connector	0.5dB Max. (0.45dB typ.)			0.5dB Max. (0.45dB typ.)		
Pull Strength	≥98N			≥98N		

## Color Code

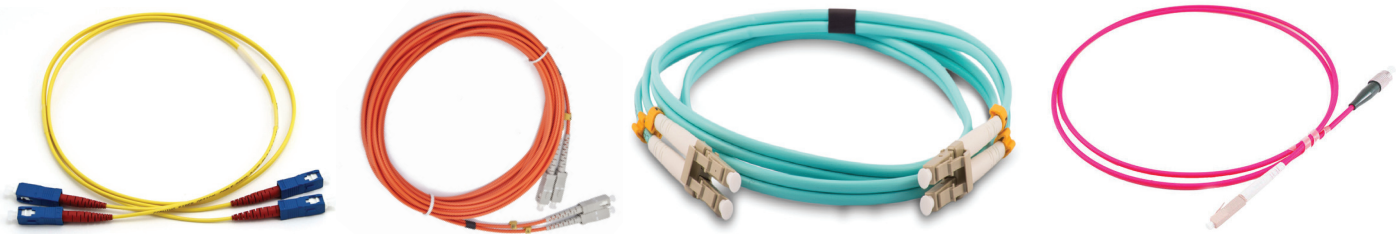
YE-Yellow

OR-Orange

AQ-Aqua

PU-Purple

Note: Yellow Jacket for SM, Orange Jacket for OM1~OM2, Aqua Jacket for OM3 and Purple Jacket for OM4. (other colors may be available upon request).



## Ordering Information

ITEM	SM 9/125	MM 62.5/125 (OM-1)	MM 50/125 (OM-2)	MM 50/125 (OM-3)	MM 50/125 (OM-4)
1	011-SCSC-SM-010	011-SCSC-OM1-010	011-SCSC-OM1-010	011-SCSC-OM1-010	011-SCSC-OM1-010
2	011-SCSC-SM-020	011-SCSC-OM1-020	011-SCSC-OM1-020	011-SCSC-OM1-020	011-SCSC-OM1-020
3	011-SCSC-SM-030	011-SCSC-OM1-030	011-SCSC-OM1-030	011-SCSC-OM1-030	011-SCSC-OM1-030
4	011-SCSC-SM-050	011-SCSC-OM1-050	011-SCSC-OM1-050	011-SCSC-OM1-050	011-SCSC-OM1-050