

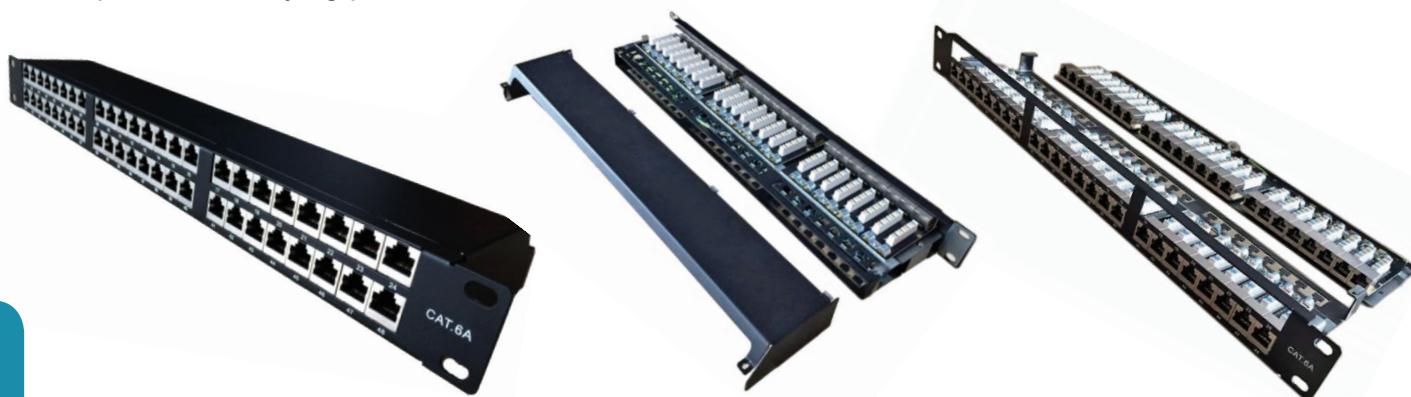
➤ Cat6A - Shielded 48Port Patch Panel

FEATURES

- Support Cat6A 500MHz requirement
- Backward compatibility for cat6 and Cat5E
- Hand screw, easy to open cover
- Unique design of balance circuit board and line pair decrease cross talk and increase allowance.
- Sturdy and easy-install design reduces installation and operating costs.
- Unique design of IDC terminating block allows 110 or krone tools.
- Compatible with 19-inch rack and cabinets.
- Labels for all ports ensure convenient operation.
- ID stripes for identifying port allocations

TECHNICAL DETAILS

- Dielectric strength: 1,000V RMS 60Hz/1min
- Rated current: Maximum 1.5A
- Insulation resistance(minimum): 500megohm
- Contact resistance(maximum): 100milliohm
- IDC clip:
Phosphor Bronze Stamp Pin 0.35mm
- Durability:
1500 times plugging, 250 times terminating
- Module style RJ45 jack socket
- Panel Frame:
Cold-rolled steel sheet electrostatic spray in black
- 19" Width, 1U Height



COMPLIANCES

- ▶ - ISO/IEC 11801: 2002
- ▶ EIA/TIA 568A/B Wiring standard
- ▶ EEN50173-1: 2002
- ▶ - ANSI/EIA/TIA 568B.2: 2002
- ▶ RoHS

TRANSMISSION PERFORMANCE

Frequency (MHz)	1.0	4.0	8.0	10.0	16.0	20.0	25.0	31.3	62.5	100.0	200.0	250.0	300.0	400.0	500.0
Insertion loss (Db)	0.1	0.1	0.1	0.1	0.1	0.1	0.1	0.1	0.2	0.2	0.3	0.3	0.4	0.4	0.5
Next (Db)	75.0	75.0	75.0	74.0	69.9	68.0	66.0	64.1	58.1	54.0	48.0	46.0	42.9	37.9	34.0
PSNext (Db)	70.5	70.5	70.5	70.5	70.5	70.5	70.5	70.5	70.5	70.5	64.5	62.5	61.0	58.5	56.5
RL (Db)	30.0	30.0	30.0	30.0	30.0	30.0	30.0	30.0	30.0	28.0	22.0	20.0	18.5	16.0	14.0

Ordering Information

003-SFTP-06A-048-00L